

PROTEKTOR

PROFILES FOR EXTERNAL THERMAL INSULATION COMPOSITE SYSTEMS

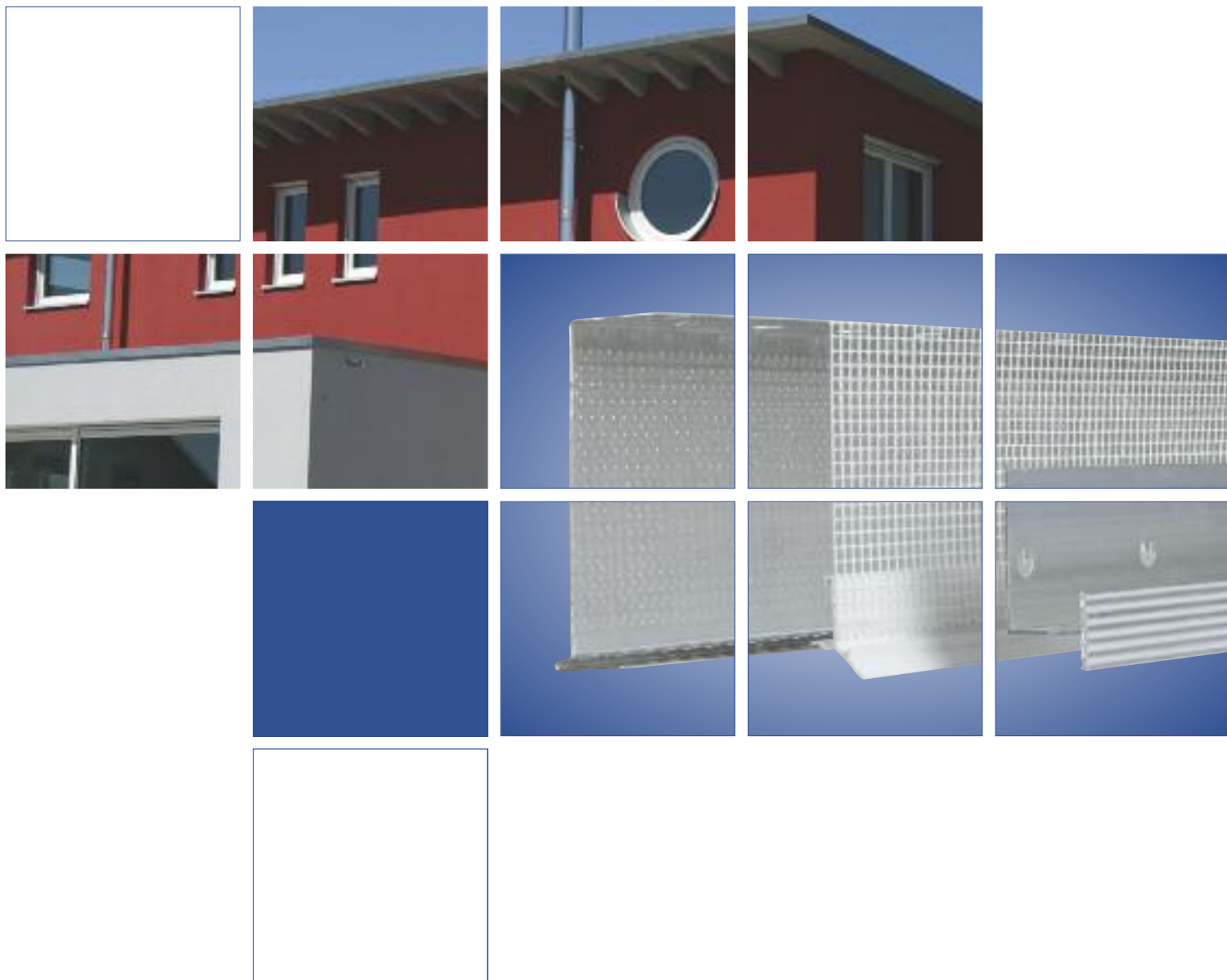


Table of contents

By profile numbers



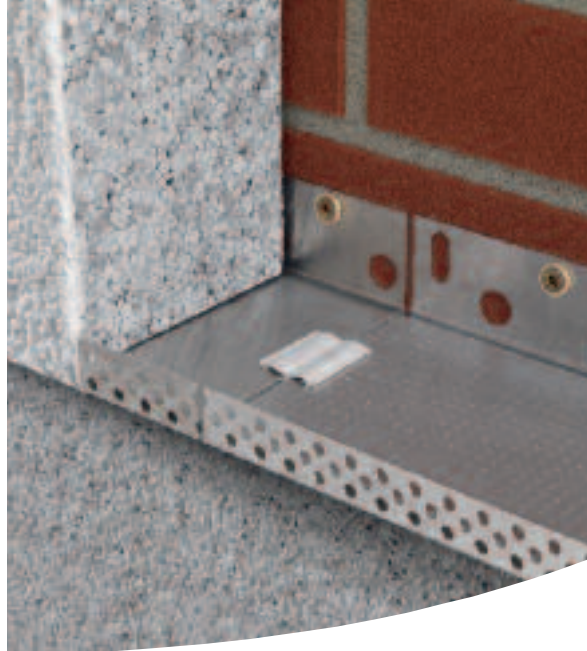
Profile no.	Page
1091	13
1092	13
1093	13
2031	12
2130	5
2132	5
2134	5
2141	8
2142	8
2151	8
2152	8
2154	9
2318	10
2320	10
2330	10
2332	10
3035	11
3036	11
3705	12
3707	12
3709	12
3721	18
3728	18
37400	5
37401	5
37402	5
3749	16
37500	6
37501	6
37502	6
37503	6
37506	6
37512	6
37515	6
37517	16
37531	11

Profile no.	Page
3752	12
3756	3
3757	3
3759	14
3760	14
3761	14
3791	17
3793	17
3794	9
37941	9
37942	9
3796	17
37968	12
3797	12
3799	12
8315	10
9011	9
90602	3
90603	3
90604	3
90605	3
90606	3
90607	3
90608	3
90609	3
90810	3
90811	3
90812	3
90813	3
90814	3
90815	3
90816	3
90818	3
90820	3
9075	12
91017	3

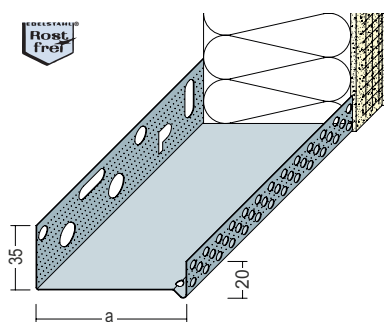
Profile no.	Page
91019	3
91021	3
91022	3
9103	13
9107	13
9114	14
9115	14
9116	14
9121	5
9122	5
9124	5
9141	4
9153	7
9154	7
9155	7
9156	7
9157	7
9158	7
9159	7
9160	7
9162	7
9181	8
9182	8
9224	15
9244	7
9245	7
9246	7
9247	7
9248	7
9249	7
9250	7
9252	7
9254	7
9258	7
93316	7
93320	7

Profile no.	Page
94403	4
94404	4
94405	4
94406	4
94407	4
94408	4
94409	4
94410	4
94412	4
94414	4
94416	4
94418	4
94420	4
95514	7
95516	7





90602 – 91022
2112 – 2150



3756
Connecting profile

3757
Mounting set includes
connecting profiles



90602 – 91022 } Base profiles for thermal insulation systems, matched to various insulation thicknesses.
2112 – 2150 }

3756 Connecting piece for base profiles.

3757 Mounting set consisting of levelling pieces (3 mm), dowels and connecting pieces for base profiles.

Aluminium	Stainless steel				
Profile no.	Profile no.	Length in cm	Packaging 1 length per bundle	clear Width	Insulation (a) in mm
90602		250	10	22	20
90603	2143	250	10	32	30
90604	2144	250	10	42	40
90605	2145	250	10	52	50
90606	2146	250	10	62	60
90607	2147	250	10	72	70
90608	2148	250	10	82	80
90609	2149	250	10	92	90
90810	2150	250	10	102	100
90811		250	6	112	110
90812	2112	250	6	122	120
90813		250	6	132	130
90814	2113	250	6	142	140
90815		250	6	152	150
90816	2114	250	6	162	160
91017*		250	6	172	170
90818*	2116	250	6	182	180
91019*		250	6	192	190
90820*	2118	250	6	202	200
91021		250	6	212	210
91022		250	6	222	220

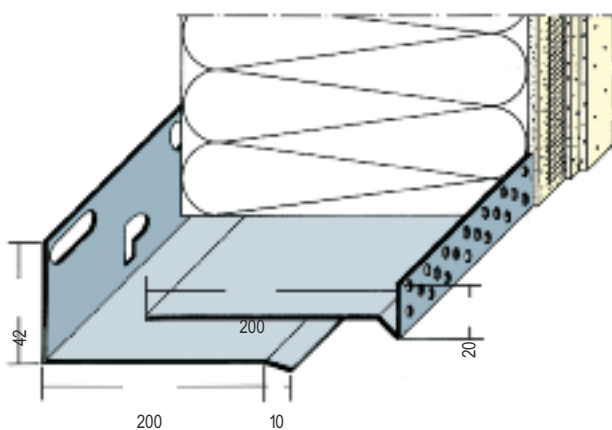
Profile no.	Piece	Length in mm
3756 Connecting profile	100	30
3757 Mounting set		
Levelling pieces	50	
Connecting profile	10	30
Dowel	75	

* not a stock item, delivery time on request

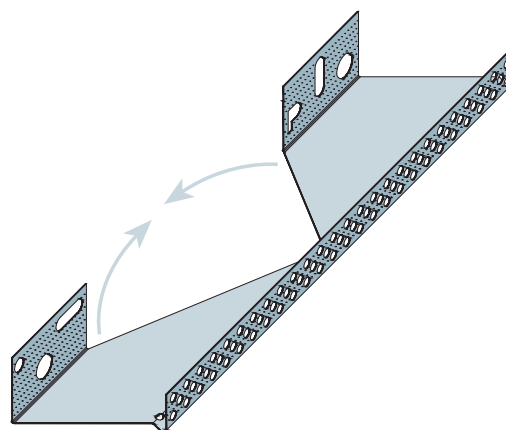




9141



94403 – 94420

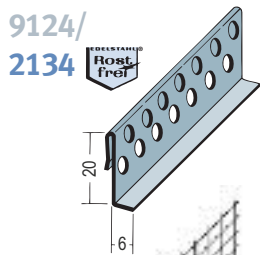
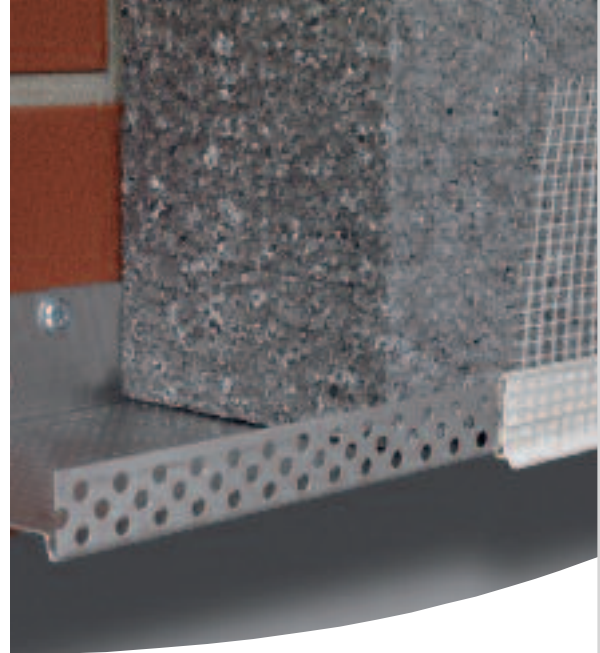
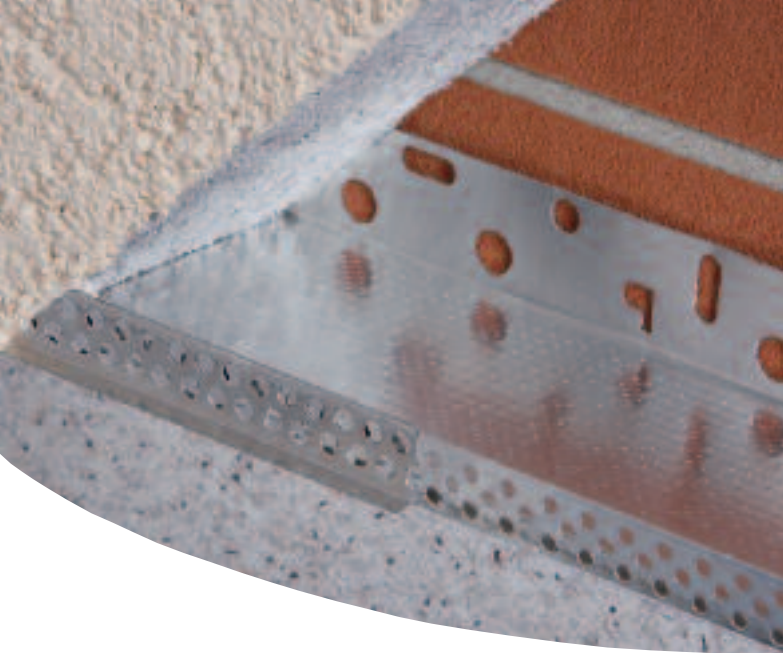


9141 Two-piece, variable aluminium render profile for insulation thicknesses from 200 to 300 mm.

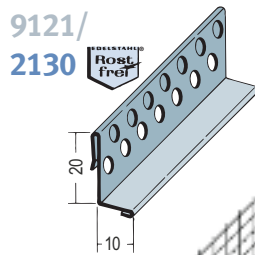
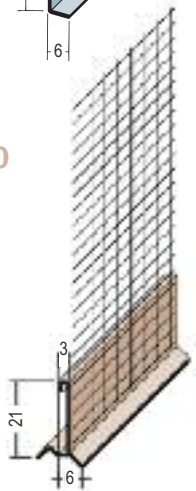
94403 – 94420 Pre-cut corners to suit box-shaped base profiles made of aluminium for precise corner formation. Length approx. 75 cm. Starting with an insulation thickness of 140 mm, corners are supplied with a full-length wall side for improved handling.

Aluminium				
Profile no. Corner piece	Length in cm	Packaging 1 length per bundle	clear Width	Insulation in mm
9141	250	4	200-300	200-300
94403	250	10	32	30
94404	250	10	42	40
94405	250	10	52	50
94406	250	10	62	60
94407	250	10	72	70
94408	250	10	82	80
94409	250	10	92	90
94410	250	10	102	100
94412	250	4	122	120
94414	250	4	142	140
94416	250	4	162	160
94418*	250	4	182	180
94420*	250	4	202	200

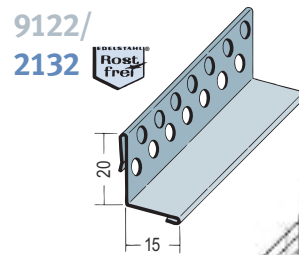
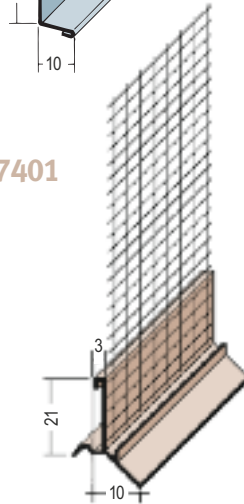




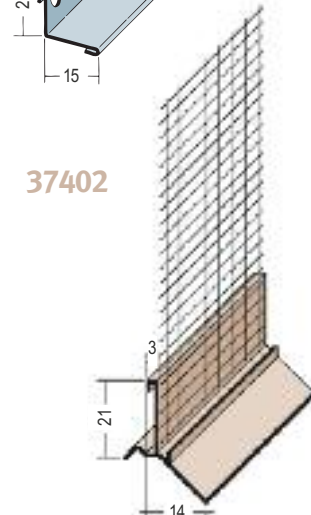
37400



37401



37402



Aluminium, stainless steel and PVC-profiles to clip on to the base profiles.

9124/2134/37400 For 6 mm plaster thickness.

9121/2130/37401 For 10 mm plaster thickness.

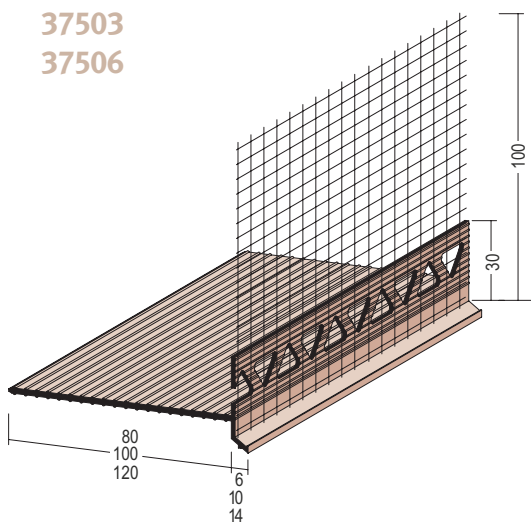
9122/2132/37402 For 14/15 mm plaster thickness.

Aluminium	Stainless steel	PVC	Length in cm	Packaging 1 length per bundle	Plaster thick- ness in mm
Profile no.	Profile no.	Profile no.			
9124	2134		250	20	6
9121	2130		250	20	10
9122	2132		250	20	15
		37400	250	15	6
		37401	250	15	10
		37402	250	15	14

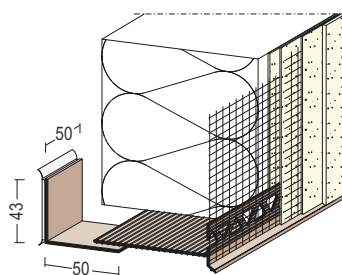




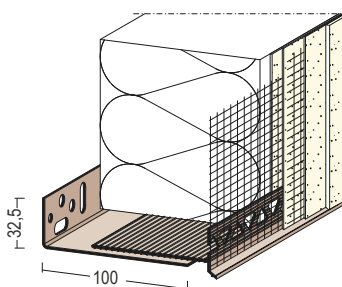
37500
37501
37502
37503
37506



37512 + PVC base profile



37515 + PVC base profile



Various insulation thicknesses in combination with PVC render profiles

Mounting bracket in combination with	For insulation thicknesses
37500	80 – 110 mm
37501	100 – 130 mm
37502	120 – 150 mm
37503	80 – 110 mm
37506	80 – 110 mm

Possible insulation thicknesses in combination with PVC render profiles

Mounting bracket in combination with	For insulation thicknesses
37500	100 – 160 mm
37501	100 – 180 mm
37502	120 – 200 mm
37503	100 – 160 mm
37506	100 – 160 mm

37500 – 37506 PVC render profile without thermal bridge for recessed base, for insertion between façade and perimeter insulation.

37512 PVC mounting bracket with adhesion gel as a mounting aid for the insulating boards.

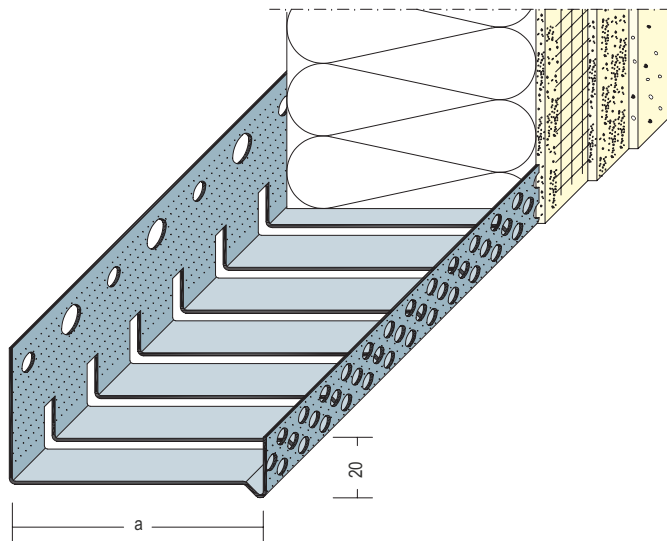
37515 PVC mounting bracket as a lower support for the insulating boards.

PVC						
Profile no.	Length in cm	Packaging 1 length per bundle	clear Width	Insulation in mm	Plaster thickness	Side length in mm
37500	200	15			6	80
37501	200	15			6	100
37502	200	15			6	120
37503	200	10			10	80
37506	200	10			14	80
37512	5	100 Stk/Karton				
37515		15		100-200		100

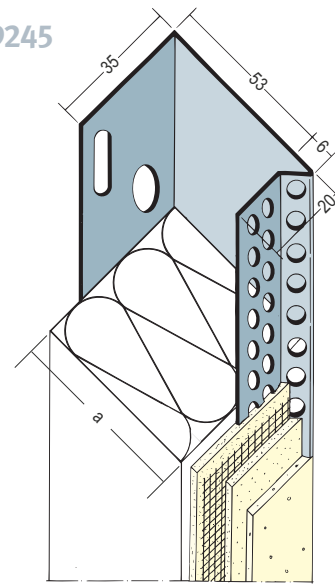




9153 – 95516



9245



9153 – 95516 Base profiles for thermal insulation systems, matched to various insulation thicknesses. Pre-stamping makes it possible to use these profiles on curved walls. Procedure: Cut out punching in the wall side and bend the profile to follow the course of the wall. Observe the recommendations of the thermal insulation system supplier.

9244 – 93320 Aluminium stop profiles for thermal insulation systems, adapted to different insulation thicknesses.

Aluminium				
Profile no.	Length in cm	Packaging 1 length per bundle	clear Width	Insulation (a) in mm
9153	250	5	32	30
9154	250	5	42	40
9155	250	5	52	50
9156	250	5	62	60
9157	250	5	72	70
9158	250	5	82	80
9159	250	5	92	90
9160	250	5	102	100
9162	250	4	122	120
95514	250	6	142	140
95516	250	6	162	160

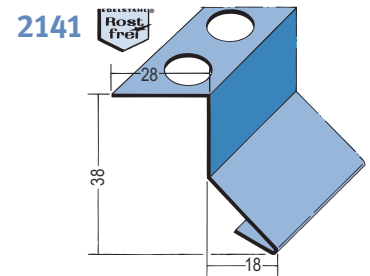
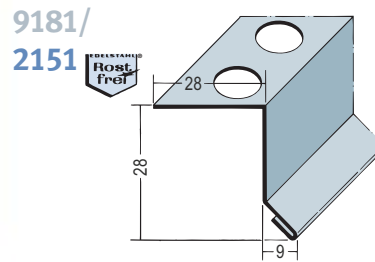
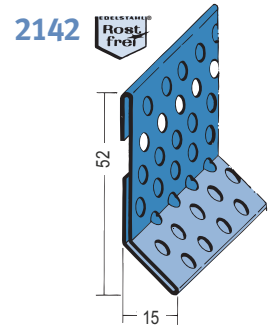
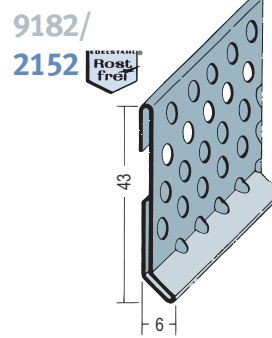
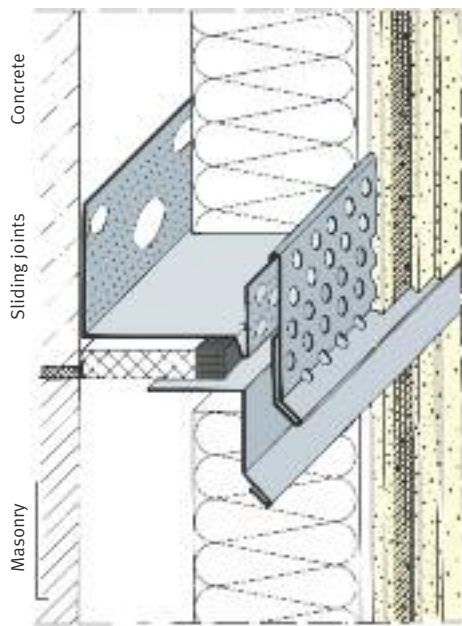
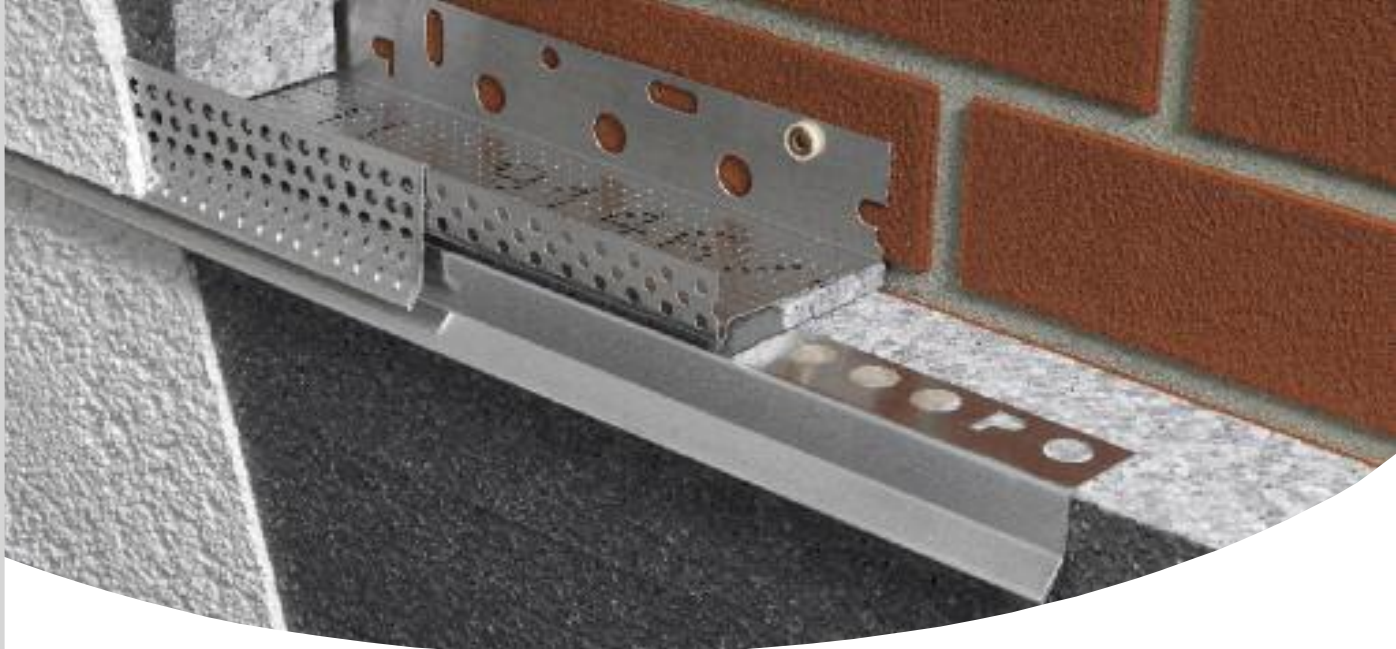
Aluminium				
Profile no.	Length in cm	Packaging 1 length per bundle	clear Width	Insulation (a) in mm
9244	250	10	42	40
9245	250	10	52	50
9246	250	10	62	60
9247	250	10	72	70
9248	250	10	82	80
9249	250	10	92	90
9250	250	10	102	100
9252	250	10	122	120
9254*	250	6	142	140
93316*	250	6	162	160
9258*	250	6	182	180
93320*	250	6	202	200

* not a stock item, delivery time on request



Profile combination forming horizontal sliding joints

Thermal insulation systems

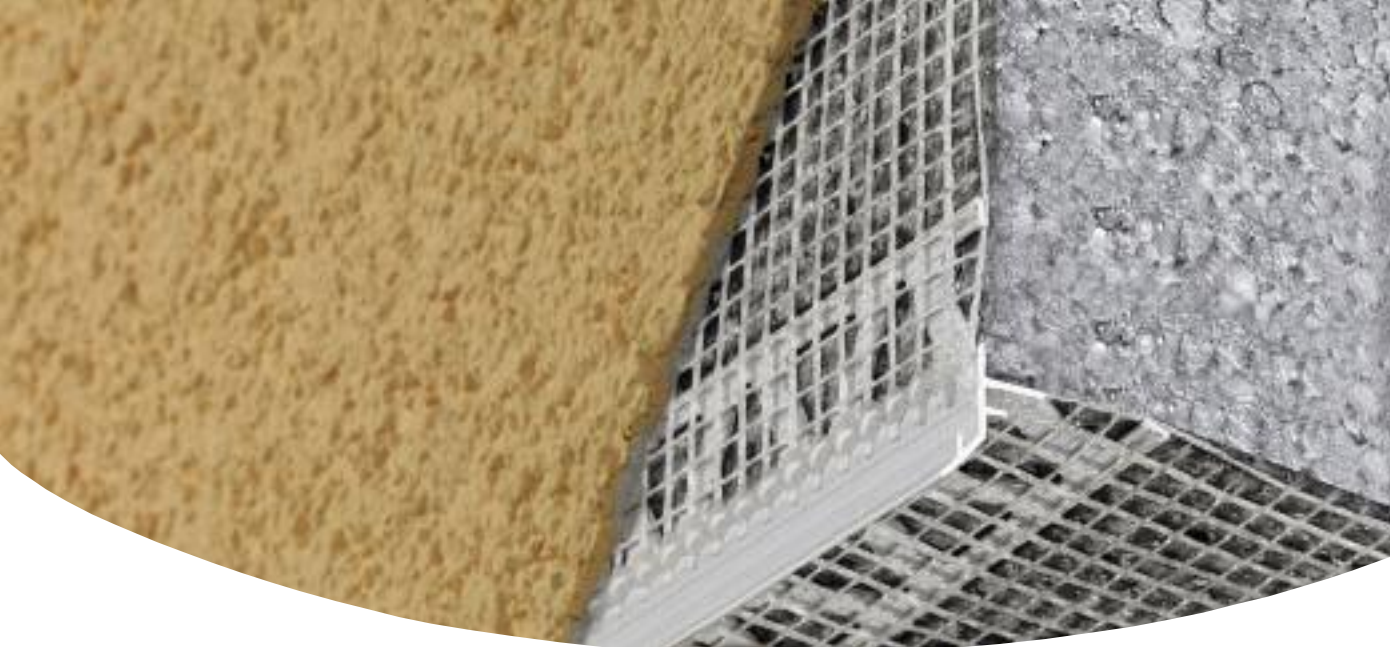


Installation instructions:

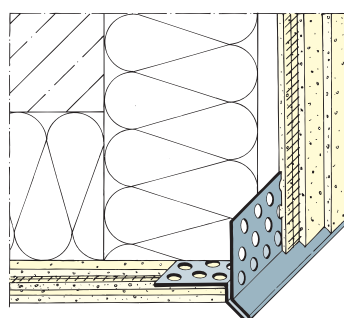
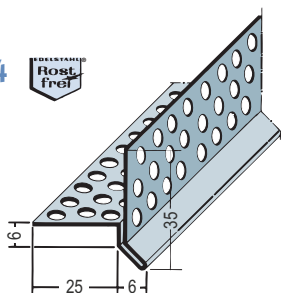
Place the fastening side of the bottom part profile on the upper edge of the insulation panel that runs parallel to the joint or sliding joint in the building at a given height and apply a light coat of adhesive. A polystyrene strip approx. 8 mm thick with compression tape is then placed on the bottom part. Set the render profile on top of the polystyrene strip and fasten it to the subsurface. After laying in the insulation panels, hang the perforated clip-on profile. Ensure that the butt joints between profiles are to be arranged offset. The bottom parts and perforated clip-on profiles are designed for organic and mineral plaster applications.

Aluminium	Stainless steel	Length in cm	Packaging 1 length per bundle	Plaster thickness in mm
Profile no.	Profile no.			
9181		250	20	6
9182		250	20	6
	2151	250	10	6
	2152	250	10	6
	2141	250	10	15
	2142	250	10	15

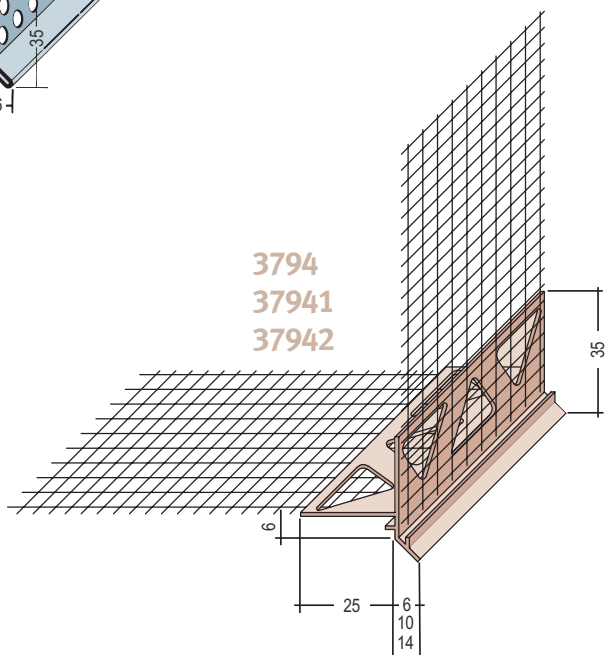




9011/2154



3794
37941
37942

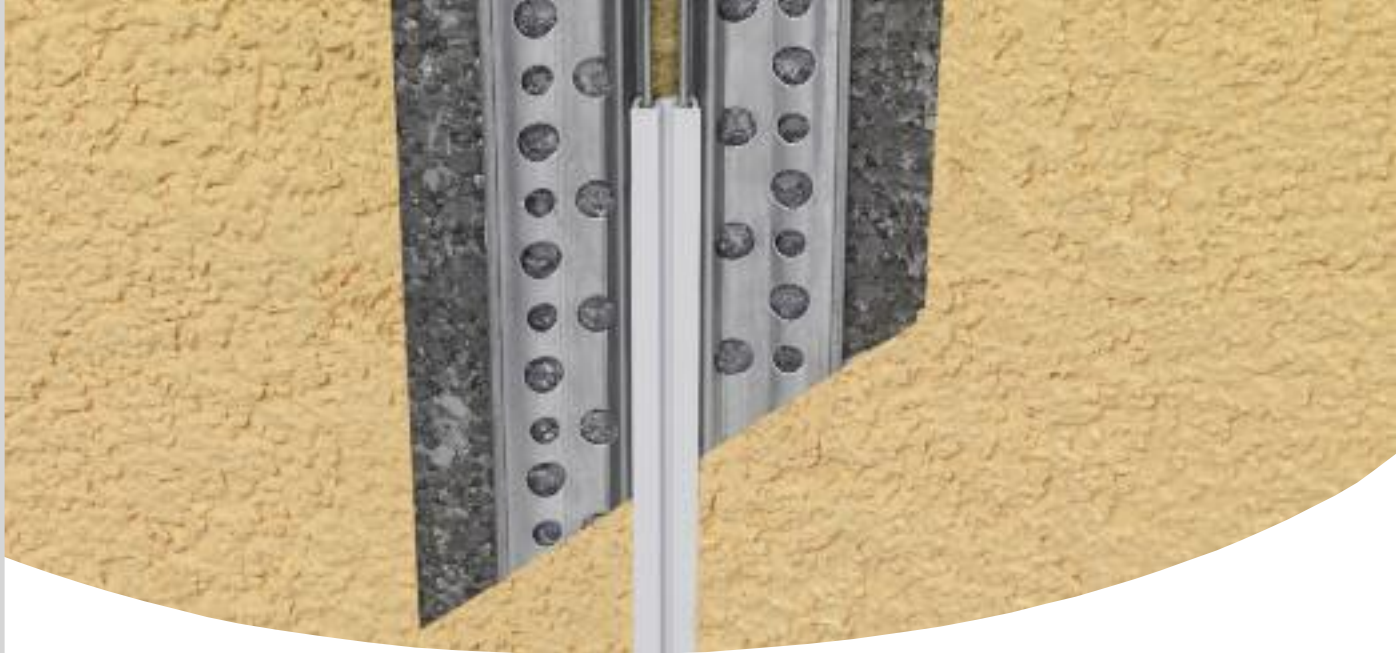


9011/2154/3794
37941/37942

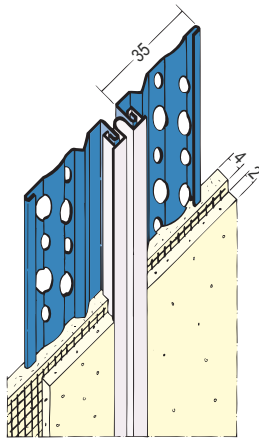
Water drip profiles for the execution of a clean finish with insulating attic realisation or balcony underside.

Aluminium	Stainless steel	PVC	Length in cm	Packaging 1 length per bundle	Plaster thick- ness in mm
Profile no.	Profile no.	Profile no.			
9011	2154		250	20	6
		3794	250	10	6
		37941	250	10	10
		37942	250	10	14

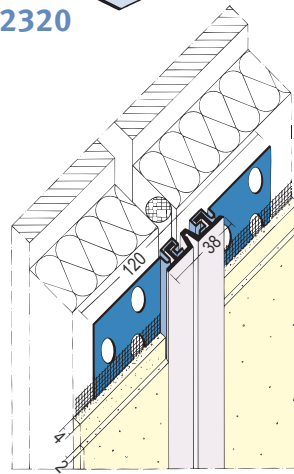




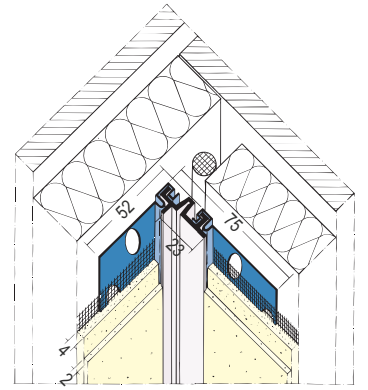
8315



2318/
2320



2330/
2332



8315® Movement joint profile made of stainless steel for thin-layer thermal insulation systems, 6 mm plaster thickness. **Movement absorption: +/-1 mm**

2318/2330® Expansion joint profiles made of stainless steel for thermal insulation systems, 6 mm plaster thickness, with alkali-resistant glass fibre mesh. For 25 mm joints. **Movement absorption: +5/-2 mm**

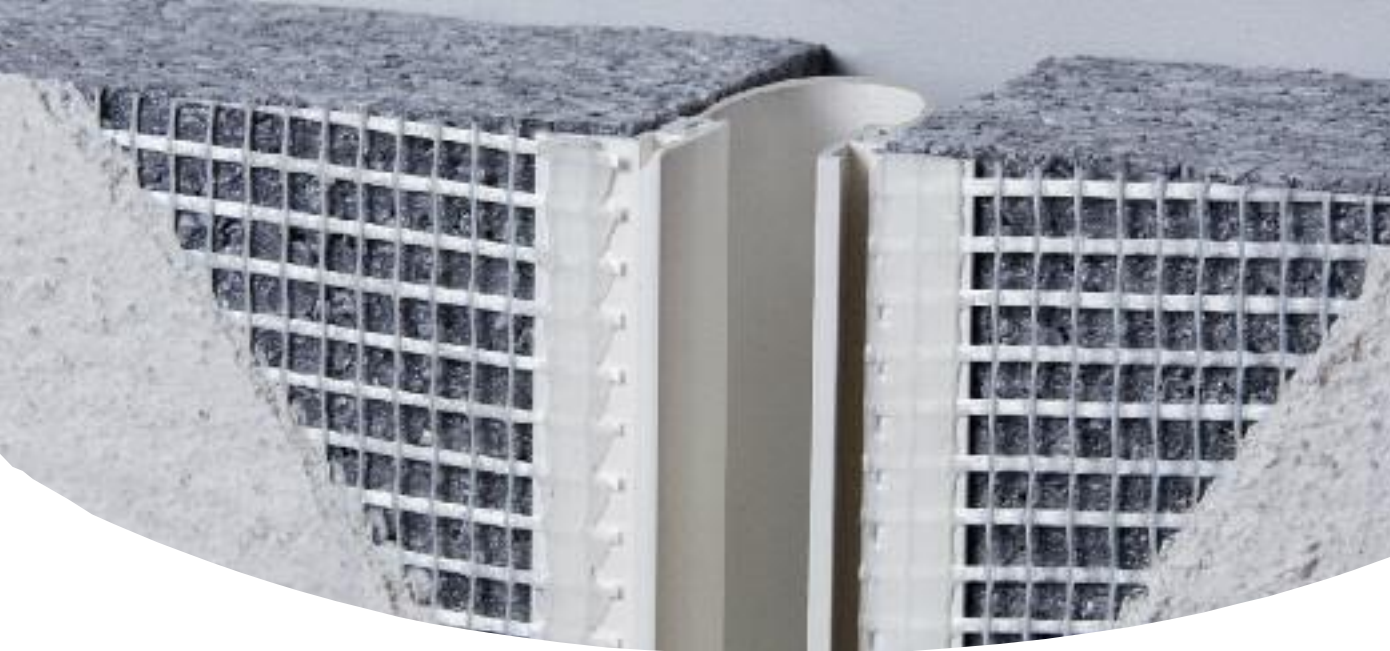
2320/2332® Without alkali-resistant glass fibre mesh.

Note: Only for vertical use. Centre piece can only sustain limited coatings

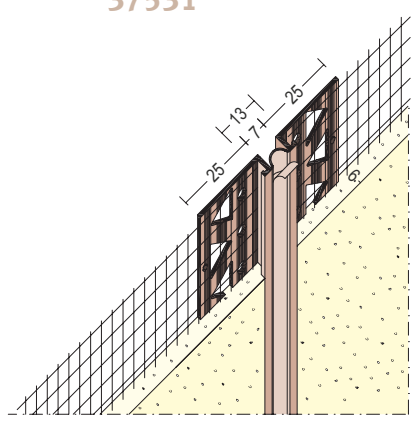
Stainless steel						
Profile no.	Length in cm	Packaging 1 length per bundle	Joint width in mm	Plaster thickness in mm	Colour no.	Mesh dimensions in m
8315	300	5		6	10	
2318	300	5	25	6	10	120 120
2330	300	5	25	6	10	120 120
2320	300	5	25	8	10	
2332	300	5	25	8	10	



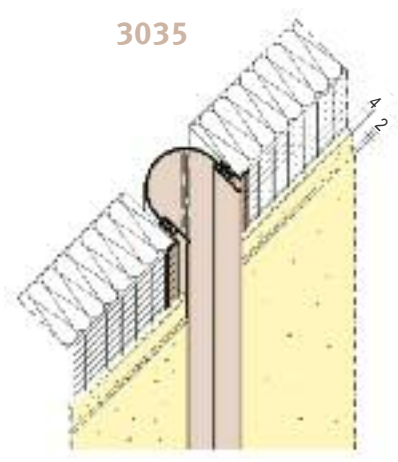
® with elastic centre piece, colour no. 10 = white
 ® hard PVC with soft PVC bridge, colour no. 10 = white



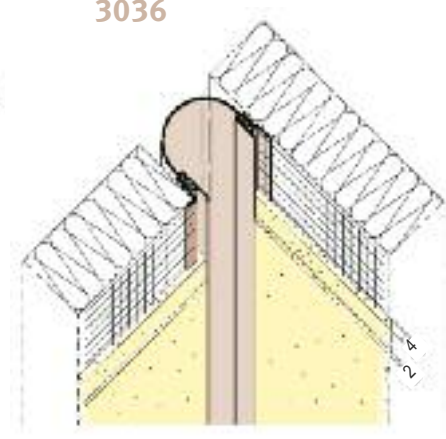
37531



3035



3036



37531

Movement joint profile made of PVC, suitable for surfaces and interior corners up to 90°. **Movement absorption: +/-1 mm**

3035/3036

Expansion joint profiles with soft PVC centre piece for thermal insulation systems, with alkali-resistant glass fibre mesh. **Movement absorption: +/-5 mm**

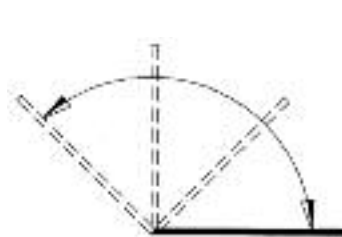
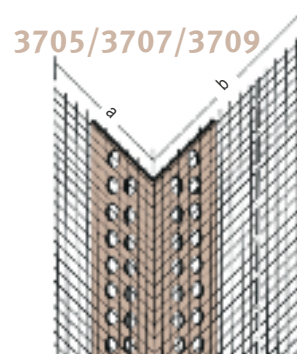
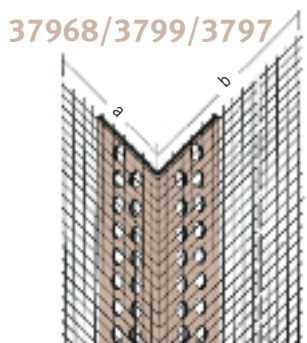
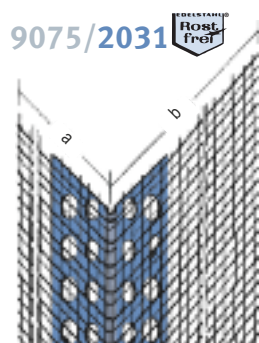
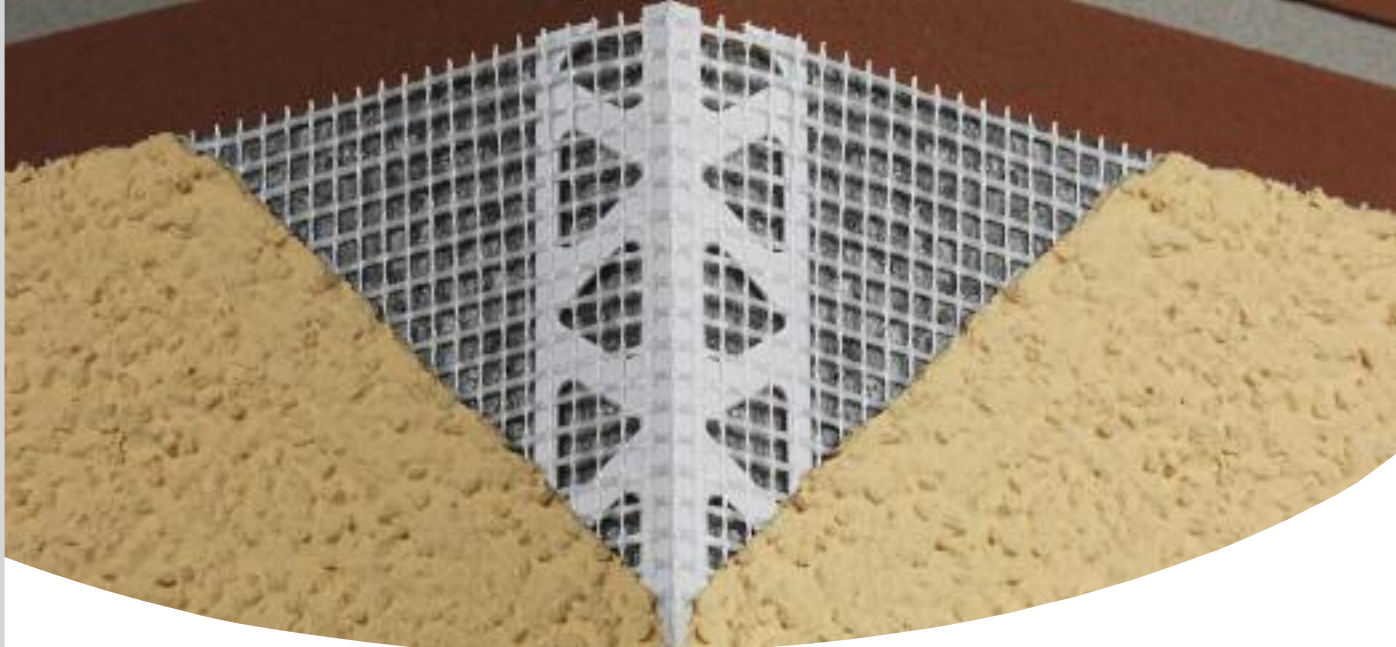
Note: Only for vertical use. Centre piece can only sustain limited coatings.

PVC			
Profile no.	Length in cm	Packaging 1 length per bundle	Plaster thickness in mm
37531	250	10	6
3035	250	25	6
3036	250	25	6

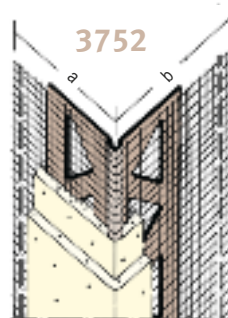


Mesh corner beads

Thermal insulation systems



Variable angle positions 3752



9075/2031
3705/3707/3709
37968/3799/3797

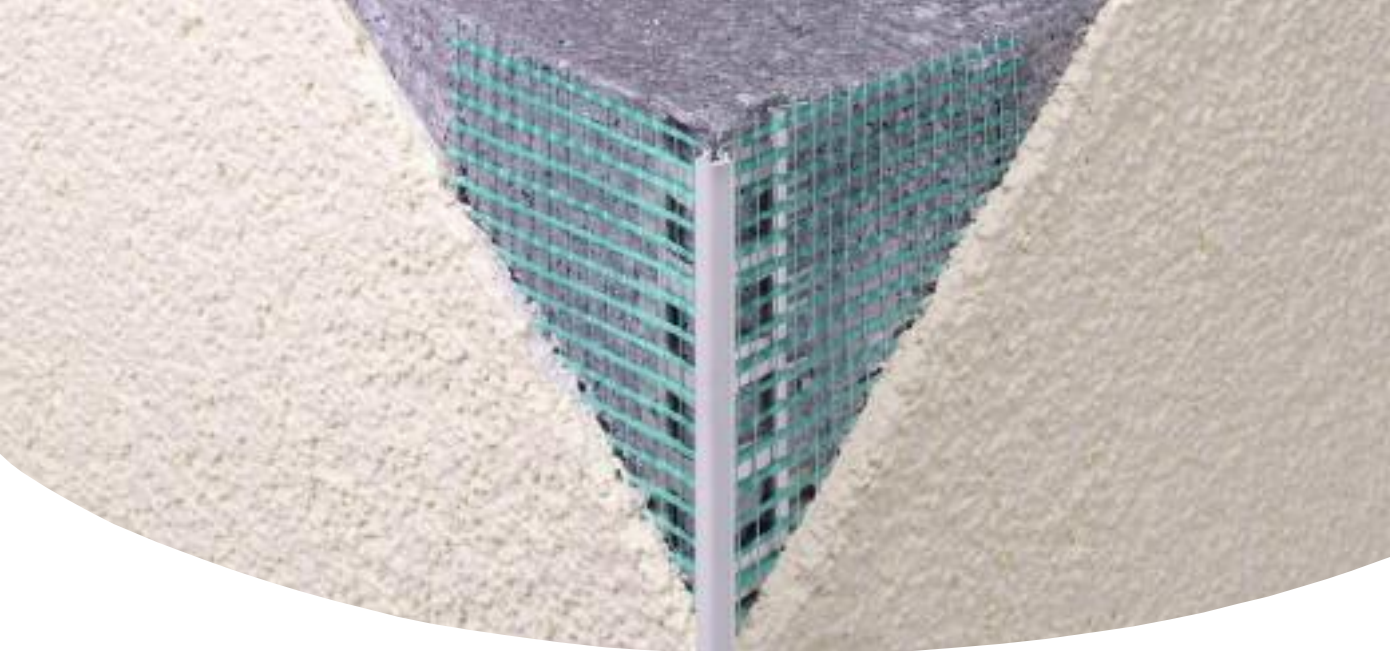
Mesh corner beads made of PVC, aluminium, stainless steel and polystyrene, equipped with fine glass fibre mesh, for thermal insulation systems

3752

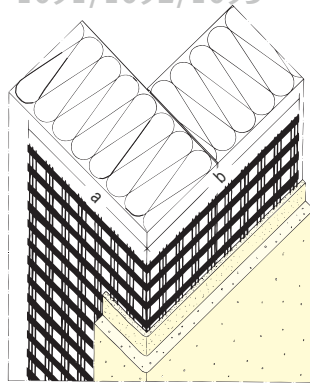
PVC mesh corner beads "on the roll" with alkali-resistant glass fibre mesh (4 x 4 mm). The "kink fold" allows the formation of corner angles from sharp to blunt (e.g. 135° etc.). The roll length of 50 meters allows joint-free corner formation (e.g. on house corners). Even windows of different sizes can be formed without cutting the profile.

Aluminium	Stainless steel	PVC	Polystyrene	Length in cm	Packaging 1 length per bundle	Mesh dimensions in mm	
Profile no.	Profile no.	Profile no.	Profile no.			a	b
9075				250	50	100	150
	2031			250	50	100	150
		37968		250	50	100	230
		3799		250	100	80	120
		3797		250	100	100	150
		3752		1 Rolle á 50 m	1 Rolle	90	110
			3705	250	50	80	120
			3707	250	50	100	150
			3709	250	50	100	230

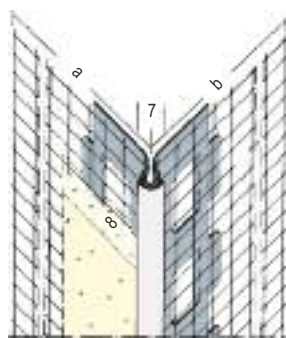




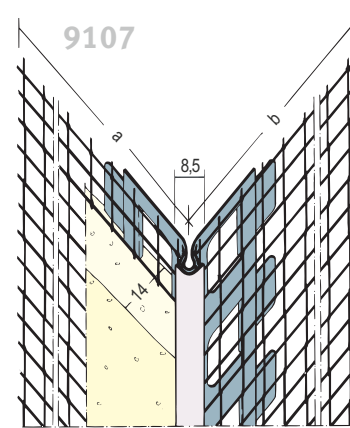
1091/1092/1093



9103



9107



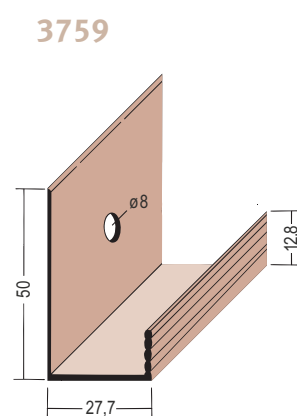
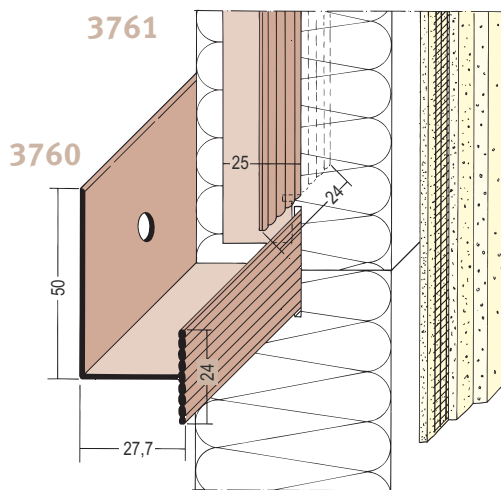
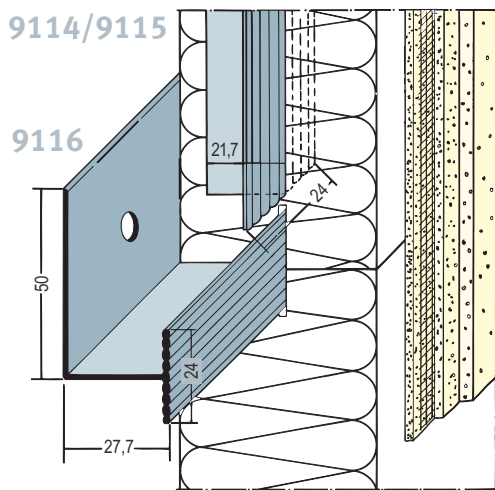
1091/1092/1093 Mesh corner angles made of sturdy armoured fibre, can also be used for interior corners.

9103/9107^{②③} Aluminium corner profile with alkali-resistant glass fibre mesh (6 x 6 mm) and PVC nose. For corner formation and reinforcing mineral finish thermal insulation systems.

Aluminium white		Profile no.	Length in cm	Packaging 1 length per bundle	Plaster thickness in mm	Colour no.	Mesh dimensions in mm	
Profile no.	Profile no.						a	b
9103			300	15	8	10	120	120
9107			300	15	14	10	120	120
	1091		260	50			60	90
	1092		260	50			80	120
	1093		260	50			100	150

② Coating: hard PVC, colour no. 10 = white
③ Base coat white

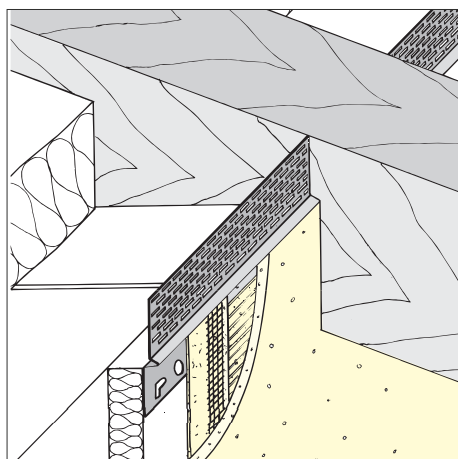




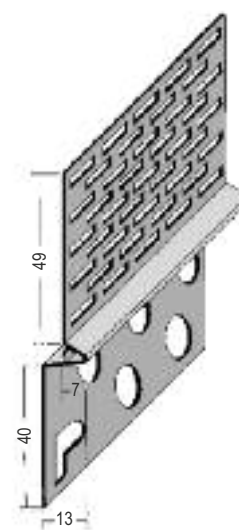
- 9114 - 9115** Aluminium connecting profiles for coupling mineral fibre panels in mechanically secured mineral finish thermal insulation systems.
- 3761** Hard PVC connecting profiles for coupling polystyrene panels in mechanically secured thermal insulation systems.
- 9116/3760** Aluminium or hard PVC support profile for mechanically secured thermal insulation systems with mineral fibre panels or polystyrene panels. An 8 mm Ø hole pattern is provided for fixation. Fastening is performed with approved façade screw dowels.
- 3759** Base rails made of PVC.

Aluminium	PVC	Length in cm	Packaging 1 carton = lengths/piece
Profile no.	Profile no.		
9114		59 = 62.5 cm panel	50 pieces
9115		47 = 50 cm panel	100 pieces
9116		200	25 lengths
	3759	250	20 lengths
	3760	250	25 lengths
	3761	49,5 = 50 cm panel	100 pieces





9224



Plaster stop for roof ventilation

Thermal insulation systems

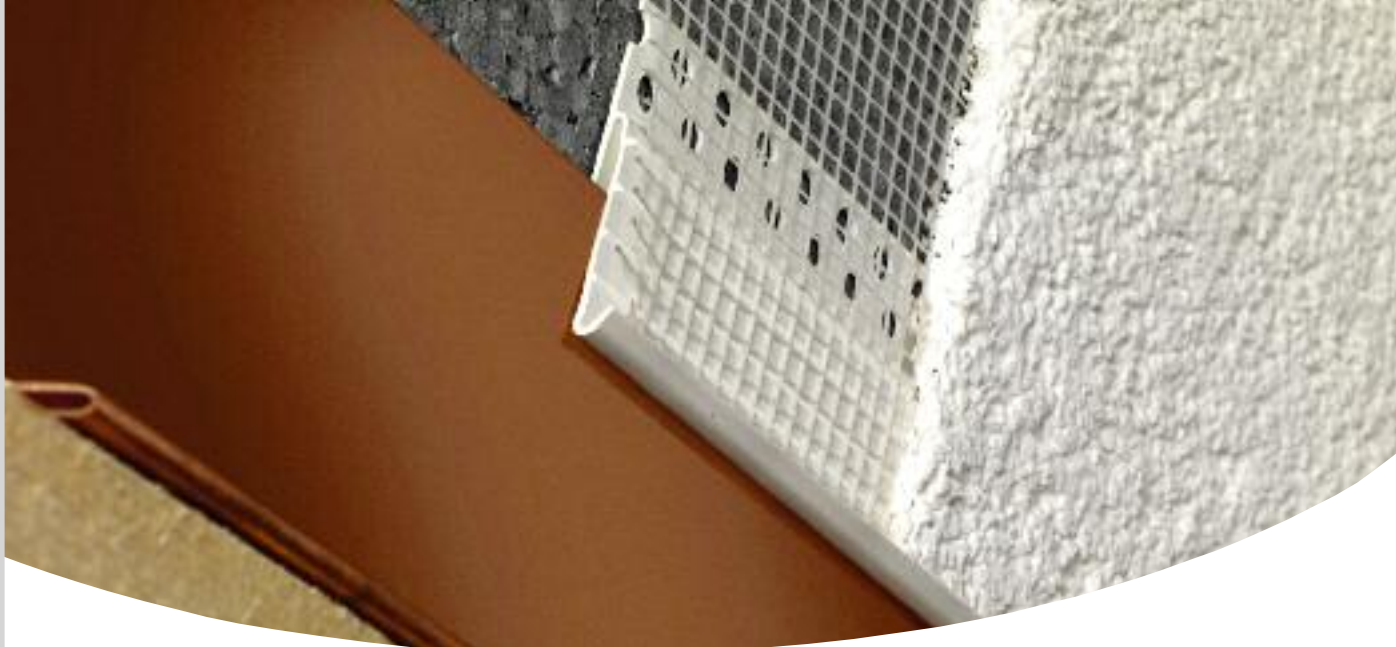
9224®

Aluminium plaster stop for roof ventilation. For mounting onto the insulation. Vent cross-section: 207 cm²/running metre.

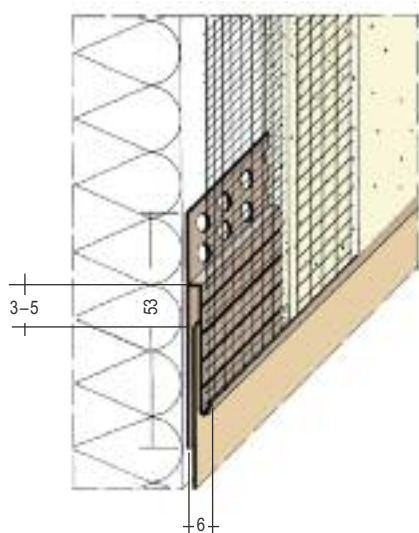
Aluminium white			
Profile no.	Length in cm	Packaging 1 length per bundle	Overhang in mm
9224	250	20	13

® Base coat white

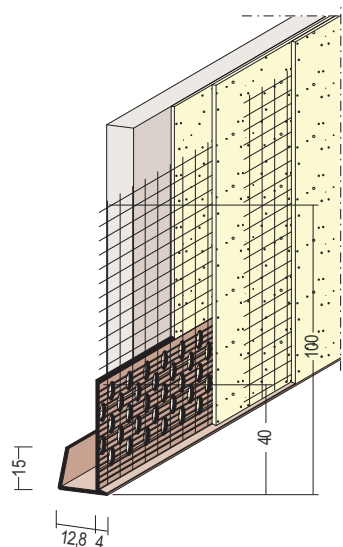




3749



37517



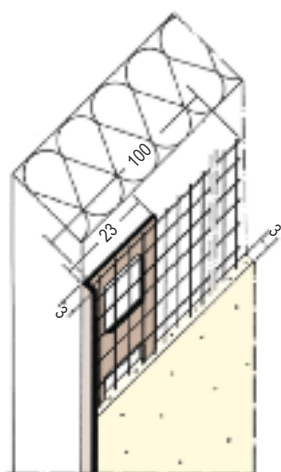
- 3749** PVC metal sheet connecting profile with alkali-resistant glass fibre mesh designed especially for fast, technically perfect formation of a connection to sheet metal flashings in thermal insulation systems.
- 37517** PVC edge profile with alkali-resistant glass fibre mesh designed as a cover for cutting edges for cement-based outdoor panels, e.g. in lintel and base areas.

PVC			
Profile no.	Length in cm	Packaging 1 length per bundle	Plaster thickness in mm
3749	250	20	6
37517	250	25	4

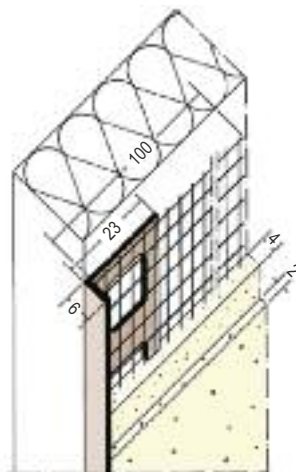




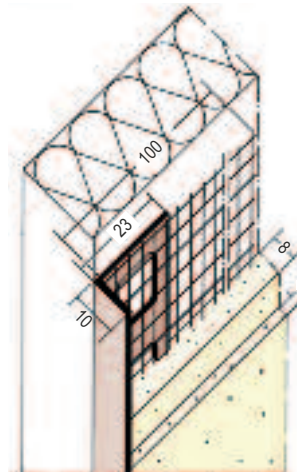
3793



3796



3791



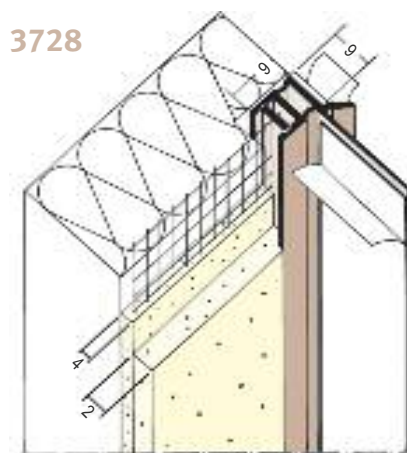
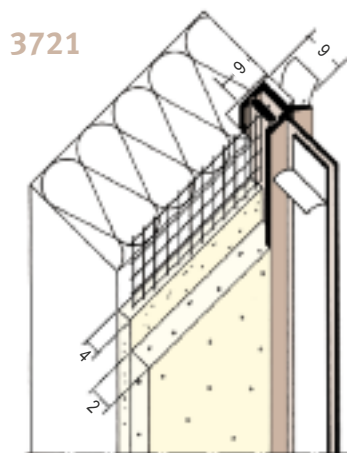
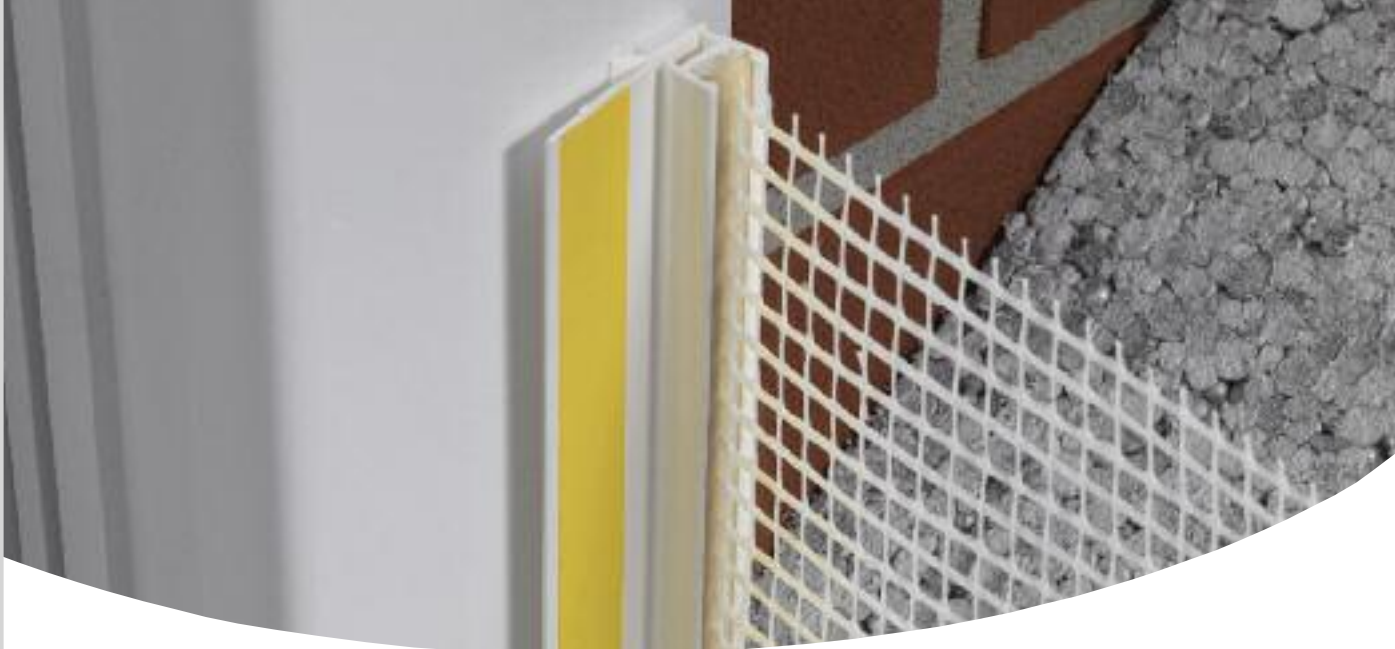
3793/3796/3791 PVC plaster stop profiles with alkali-resistant glass fibre mesh for 3 different plaster thicknesses, for renovation and thermal insulation systems

PVC			
Profile no.	Length in cm	Packaging 1 length per bundle	Plaster thickness in mm
3793	250	50	3
3796	250	50	6
3791	250	50	10



Soffit connecting profiles

Thermal insulation systems



- 3721** Self-adhesive PVC profile with sealing lip and alkali-resistant glass fibre mesh (4 x 4 mm) for producing exact soffit connections in thermal insulation systems.
- 3728** Self-adhesive PVC profile with movement chamber, sealing lip and alkali-resistant glass fibre mesh (4 x 4 mm) for producing exact soffit connections in thermal insulation systems.

Note: Minimum processing temperature for the soffit connecting profile is + 5 °C. Maximum processing length is 260 cm because of potential linear expansion. Soffit connecting profiles must never abut! Do not use on metallic surfaces with a luminosity value < 20!

PVC			
Profile no.	Length in cm	Packaging 1 length per bundle	Colour no.
3721	230, 260	50	10
3728	260	50	10





Sales areas

Northern region

Phone +49 [0] 72 25.9 77.1 20

Fax +49 [0] 72 25.9 77.3 31

Southern region

Phone +49 [0] 72 25.9 77.1 50

Fax +49 [0] 72 25.9 77.3 33

Distributin warehouses

PROTEKTORWERK Florenz Maisch GmbH & Co. KG

Viktoriastraße 58
D-76571 Gaggenau

Phone +49 [0] 72 25.9 77.0

Fax +49 [0] 72 25.9 77.1 11

PROTEKTORWERK Division

Roof drainage

Zusestraße 1
D-25524 Itzehoe/Holstein

Phone +49 48 21/8 04 07-0

Fax +49 48 21/8 04 07-77

PROTEKTORWERK
Merowingerstr. 15
D-85551 Kirchheim/bei München
Phone +49 [0] 89.31 88 04.20
Fax +49 [0] 89.31 88 04.22

Distributin warehouses

Willemsen GmbH Factory representatives Customer Service Centre West

Konrad-Adenauer-Ring 4

D-47167 Duisburg-Neumühl

Phone +49 [0] 2 03.9 95 76.0

Fax +49 [0] 2 03.9 95 76.90

PROTEKTORWERK
Gewerbestraße 15
D-15366 Hoppegarten
Phone +49 [0] 33 42.39 69.20
Fax +49 [0] 33 42.39 69.21

PROTEKTORWERK
Großpötzschau Nr. 4a
D-04579 Espenhain/OT Pötzschau
Phone +49 [0] 3 43 47.8 04.20
Fax +49 [0] 3 43 47.8 04.25

Headquarters–Production Site

PROTEKTORWERK Florenz Maisch GmbH & Co. KG

Viktoriastr. 58 · D-76571 Gaggenau · Phone +49 [0] 72 25.9 77.0 · Fax +49 [0] 72 25.9 77.1 11

www.protektor.com



**PROFILES
FOR MODERN
BUILDING**

PROTEKTORWERK

Florenz Maisch GmbH & Co. KG

P.O. Box 1420, D-76554 Gaggenau
Viktoriastr. 58, D-76571 Gaggenau

Phone +49 [0] 72 25.9 77.0

Fax +49 [0] 72 25.9 77.1 11

info@protektor.com, www.protektor.com

Version: 14 04/13 5 K 14120